

Skintek

# I/O Cards

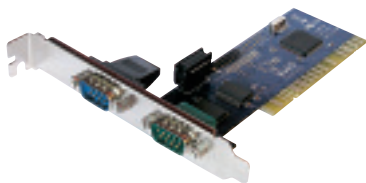
Schede di input/output



Skintek

**Scheda doppia porta  
Seriale PCI**

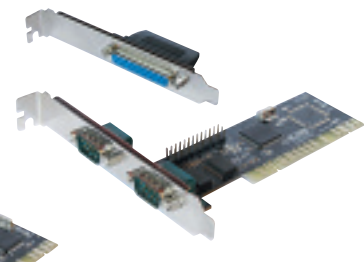
SK-CP2SL



Skintek

**Scheda doppia porta  
Seriale + Parallela PCI**

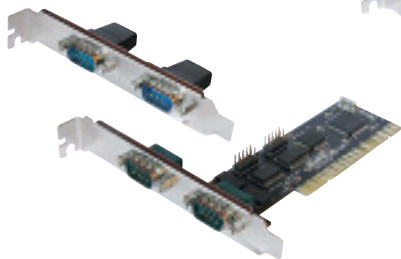
SK-CP2S1PL



Skintek

**Scheda quattro porte  
Seriali PCI**

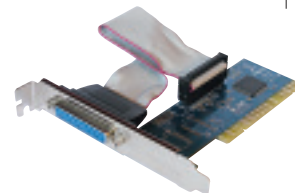
SK-CP4SL



Skintek

**Scheda una porta  
Parallela PCI**

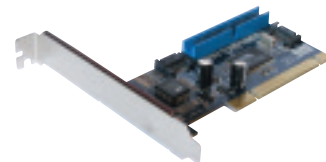
SK-CP1PL



Skintek

**Controller RAID  
2 connettori Serial ATA  
+ 1 IDE PCI**

SK-CPASA



Skintek

**Scheda doppia porta Seriale  
+ 1 Parallela PCI Express**

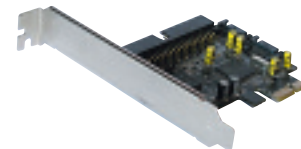
SK-CPE2S1P



Skintek

**Controller RAID  
2 connettori Serial ATA  
+ 1 IDE PCI**

SK-CPESATA-3GR



# I/O Cards

Le schede Seriali, Parallele e Combo PCI supportano standard sia 3,3V, sia 5V e sono quindi adatte per l'utilizzo con sistemi server.